

135

PANE, SMILUJ SE

heslo X 135

(♩ = 120)

KNĚZ

Pane, smiluj se. Kriste, smiluj se.

LD

Pane, smiluj se. Kriste, smiluj se.

KNĚZ

Pane, smiluj se.

LD

Pane, smiluj se.

136

17

# SLÁVA

(♩=70)

SCHOA/  
SBOR

(KNEŽ): Sláva na výsostech Bohu a na zemi pokoj lidem dobré vůle. Velebíme tě.

LID

Chválíme tě.

Musical score for the first system. It features a vocal line for the choir (SCHOA/SBOR) and a piano accompaniment. The vocal line includes the lyrics: "(KNEŽ): Sláva na výsostech Bohu a na zemi pokoj lidem dobré vůle. Velebíme tě." The piano accompaniment consists of two staves with chords and melodic lines.

S

O- Slavíme tě.

Pane a Bo-že,

L

klaníme se ti.

Vzdáváme ti díky pro svou nekonečnou slávu.

Musical score for the second system. It features a vocal line for the soloist (S) and the choir (L) and a piano accompaniment. The vocal lines include the lyrics: "O- Slavíme tě. Pane a Bo-že, klaníme se ti. Vzdáváme ti díky pro svou nekonečnou slávu." The piano accompaniment continues with two staves.

127

S  
nebeský králi, Bože, Otče všemohoucí.

L  
Pane, jedino - rozemý  
Synu - nu, Ježíši Kriste.

≡

S  
Pane a Bože, Beránek Boží, Synu Otce.

L  
Ty, hluboký sněhová  
hluboký sněhová, sněhová se vad

S  
Ty, který sáhl nás  
hříchy svými, přijmi naše prosby.

L  
námi; Ty, který se-ďíš po pravici

Detailed description: This system contains the first two lines of a musical score. The Soprano part (S) begins with the lyrics 'Ty, který sáhl nás hříchy svými, přijmi naše prosby.' The Alto part (L) begins with 'námi;' and continues with 'Ty, který se-ďíš po pravici'. The piano accompaniment consists of two staves with chords and moving lines in the right and left hands.

S  
neboť Ty jediný jsi Světlo,  
Ty jediný jsi Spasitel,

L  
Otče, smiluj se nad námi  
Ty jediný jsi Pán,

Detailed description: This system contains the second two lines of the musical score. The Soprano part (S) continues with 'neboť Ty jediný jsi Světlo, Ty jediný jsi Spasitel,'. The Alto part (L) continues with 'Otče, smiluj se nad námi Ty jediný jsi Pán,'. The piano accompaniment continues with similar harmonic support.

S  
ježi kniže,

L  
se Svätin Du-chem, ve slávě Boha Otce.

A — men.  
A — men.

217

(♩ = 58; ♪ = 170)

# VĚRIM

SCHOLA/SBOR

Musical notation for the Schola/Sbor part, first system. It consists of a single staff with a treble clef and a key signature of one flat (B-flat). The melody begins with a quarter rest, followed by a series of eighth and quarter notes.

(KŮZ): Věříme v jediného Boha, Otce všemohoucího, Stvořitele nebe i země, všeho viditelného i

LID

Musical notation for the Lid part, first system. It consists of a single staff with a treble clef and a key signature of one flat. The melody is mostly blank, with a few notes appearing in the second and third measures.

Piano accompaniment for the first system, consisting of two staves (treble and bass clefs). The right hand plays chords and moving lines, while the left hand plays a steady bass line.

S

Musical notation for the Soprano part, second system. It consists of a single staff with a treble clef and a key signature of one flat. The melody continues from the first system.

neviditelného.

L

Musical notation for the Alto part, second system. It consists of a single staff with a treble clef and a key signature of one flat. The melody continues from the first system.

Věříme v jediného Pána Ježíše Krista, jednorozumného Syna Božího,

Piano accompaniment for the second system, consisting of two staves (treble and bass clefs). The right hand plays chords and moving lines, while the left hand plays a steady bass line.

S  
 kým se zrodil z Otce přede všemi věky:

L  
 Bůh z Boha, Světlo ze Světla, pravý Bůh z pravého Boha.

Detailed description: This system contains three staves. The top staff is for Soprano (S) and the middle for Alto (L). The bottom two staves are for piano accompaniment. The music is in G major and 4/4 time. The lyrics are handwritten in Czech. The first measure of the vocal lines is followed by a double bar line. The piano accompaniment continues throughout the system.

S  
 Zrozený, nestvořený, jedné podstaty s Otcem: skrze něho všechno je stvořeno.

L  
 On pro nás lidi a pro naši spásku

Detailed description: This system contains three staves. The top staff is for Soprano (S) and the middle for Alto (L). The bottom two staves are for piano accompaniment. The music continues from the first system. The lyrics are handwritten in Czech. The first measure of the vocal lines is followed by a double bar line. The piano accompaniment continues throughout the system.

S  
L

Shrže Duha Svateho pripal Aho z Marie Panny a stal se Jozefem.  
Sestoupil z nebe.

M

S  
L

Tretiho dne volal zavrtel podle Pisma.  
Byl za nas ukrizovan, za dnu Panna Pilata byl umuten a poliken.



S  
L

A znova príjde, ve sláve, soudit žive i mrtvé a jeho království bude bez konce.

Vstoupil do nebe, sedí po pravici O — otce.

≡

S  
L

s Otcem i Synem je zároveň uctíván

Všech v Duchu Svätého, Pánů a dědice žití, který z Otce i Syna vychází,

111

S  
a oskarovan a ulovit isty parolai.

L  
Veritu o jednu, sntou, nseobecnou, apostolskou cirkvi.

Vyendralu

S  
jeden krest na odjusteni bictvi.

L  
Ostatnam sebitsem uctfch

a zivot budoucilo netu.

A ———— neu.

# SVATÝ

(♩ = 160)

Svatý, Svatý, Svatý, Pane, Bůh zastu-pi. Nebe i země jsou plny tvé slávy.

Hosana na nebe - sledk. Požehna - ní, jenž přichá-zí se jednu Pa - ně.

146

Handwritten musical score for the first system. The vocal line is written on a single staff with a treble clef and a key signature of one flat (B-flat). The lyrics "Hosanna in excelsis" are written below the notes. The piano accompaniment is written on two staves (treble and bass clefs) with a brace on the left. The music consists of three measures, with a double bar line at the end of the third measure. The piano part includes chords and single notes, with a sharp sign (#) visible in the second measure of the right hand.

An empty musical staff consisting of five horizontal lines.

An empty musical staff consisting of five horizontal lines.

An empty musical staff consisting of five horizontal lines.

An empty musical staff consisting of five horizontal lines.

An empty musical staff consisting of five horizontal lines.

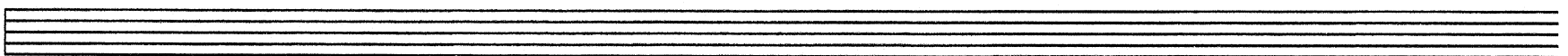
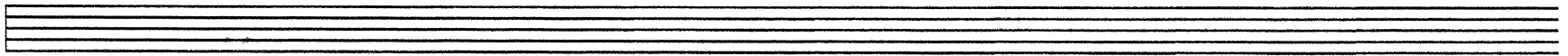
147

# BERÁNKU BOŽÍ

(♩ = 70)

Handwritten musical score for the first system of "BERÁNKU BOŽÍ". The score is written on a grand staff with a treble clef and a key signature of one sharp (F#). The tempo is marked as (♩ = 70). The lyrics are: "Beránku Boží, který svedl nás křížky světa, smiluj se nad námi. Beránku Boží,". The piano accompaniment is divided into two parts: "I. MAN" for the right hand and "II. MAN" for the left hand. The right hand part consists of a simple melody, and the left hand part consists of a bass line with chords.

Handwritten musical score for the second system of "BERÁNKU BOŽÍ". The score continues the vocal line and piano accompaniment from the first system. The lyrics are: "který svedl nás křížky světa, smiluj se nad námi. Beránku Boží, který svedl nás křížky". The piano accompaniment continues with the same structure as the first system.



314

Seta,  
dari nam pokoj.